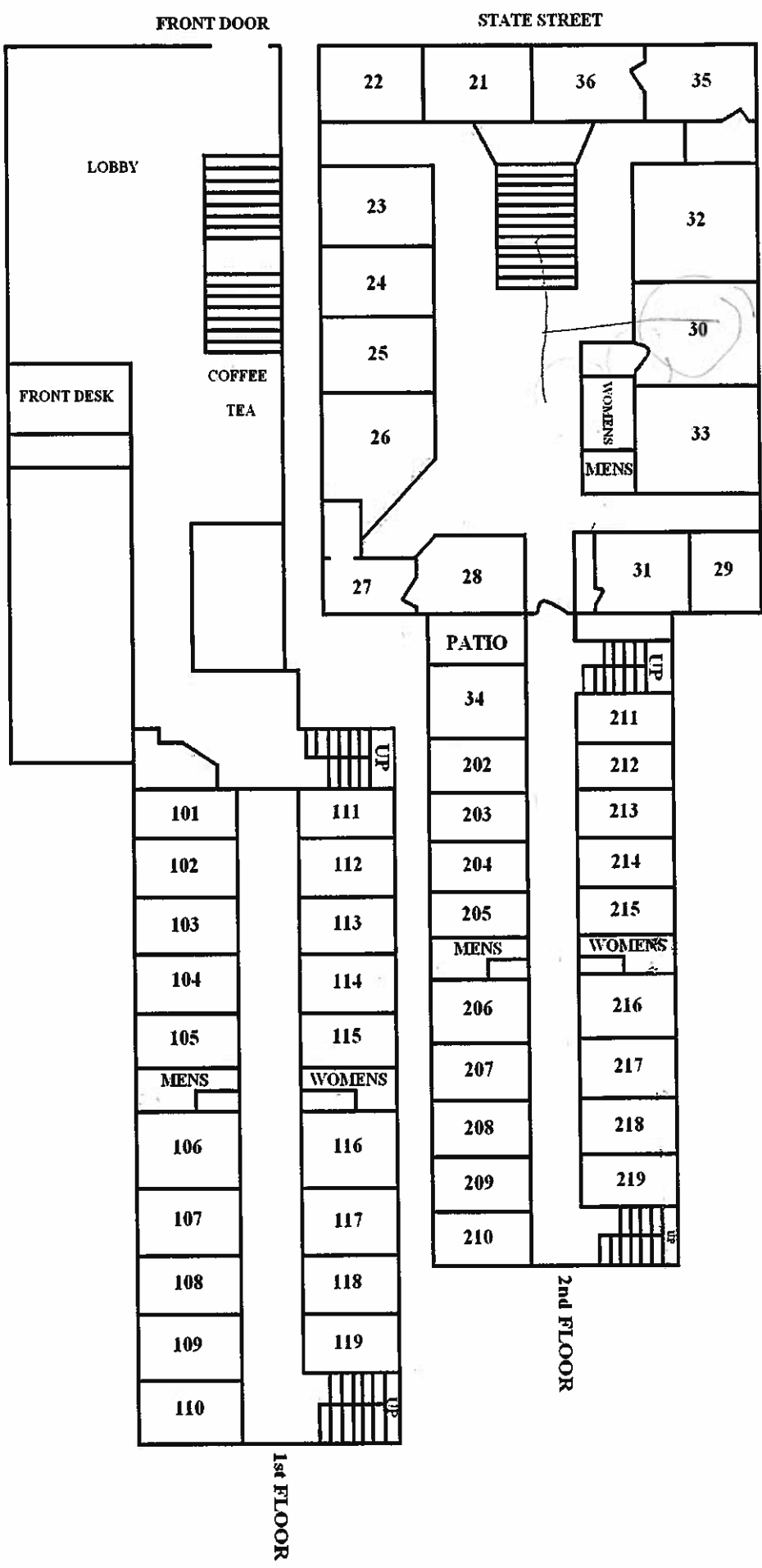


1234567890

Welcome To Hotel State Street



Office Hours - 8:00 A.M. to 10:00 P.M.

Check-in time - 2:00 P.M.

Check-out time - 11:00 A.M.

Coffee & Tea - 6:00 A.M. to 10:00 P.M.

Parking is next to the building, pls. park front end in.

When checking out, pls. leave key at Front desk.

Front door is closed at 10:00 P.M. Entry code is on your key tag.

Our ROOMS are



Pls. use Patio for Smoking.